

OXOBUTTON 1

Installation



1. Registration

To get started you have to register on the Device Manager web page.

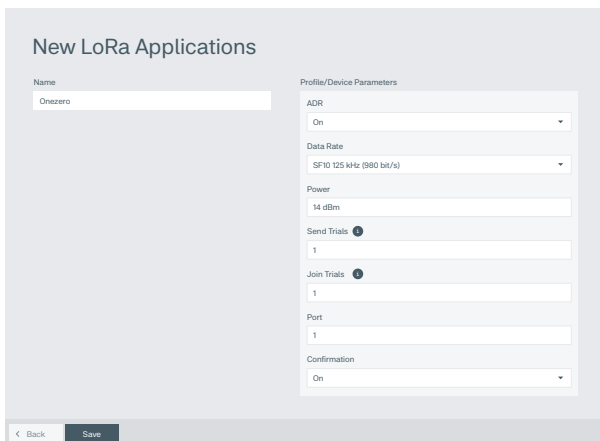
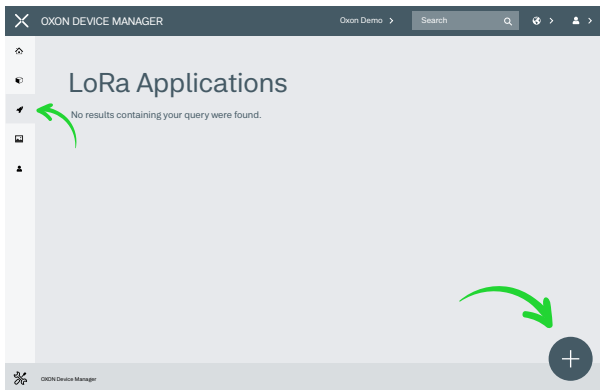
[Register here](#)



2. Create / Register a new LoRa application

Navigate to the application screen and click the “New LoRa application” button on the bottom right.

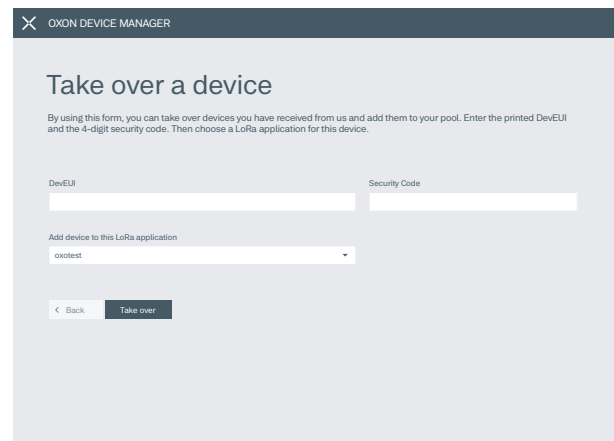
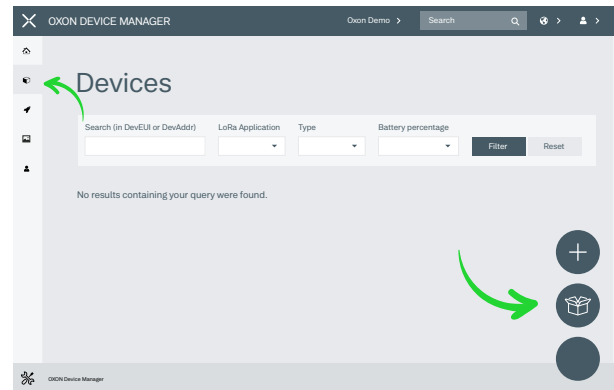
In the following screen enter an application name, set the App Key of your backend (e.g. a TTN application) and select your preferred profile/device parameters. Don't forget to click the save button in the end.



3. Assign your device(s) to your device manager account

Navigate to the devices screen and click the “Take over a device” button on the bottom right.

In the following screen, select your application and enter the device EUI and the security code of your device (check the label on the back of your device). Don't forget to click the take over button in the end.





4. Download and start the OXON Device Manager App

Download the OXON Device Manager from the google Play Store or the App Store. You can use the following QR code as a shortcut to the download page.



5. Login on the OXON Device Manager App

On the devices screen click on your account icon (top right side) and select "App Login with QR code". Then scan the shown QR code with the OXON Device Manager App.

6. Configure a device

Put the device into the BLE mode by pressing all buttons for 6 seconds (V2) or by pressing the inner small button within the case (V1 & V2). A blue-tooth icon is displayed on the EPD as long as the device is within the BLE mode. The device resets after 2 minutes if no other device (mobile phone) is connected.

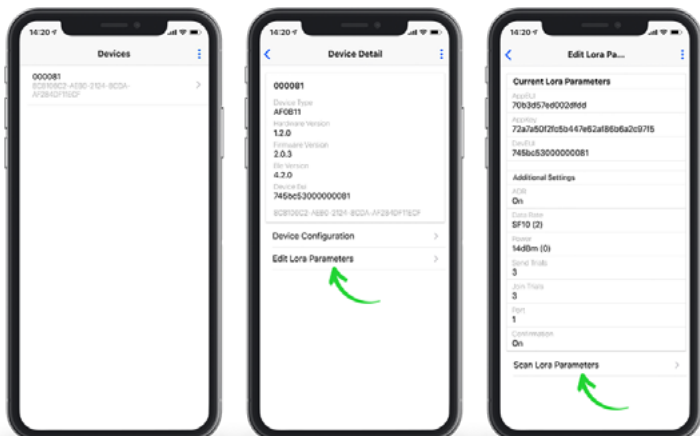
Update the screen in the OXON Device Manager App by swiping down. The device should now appear on the screen. Select the device to configure it.

6.0. Firmware Update

To update the the firmware version of a device, choose the "Device Configuration" option in the Device Manager App and then click on the Update button in the "Firmware Update" section on the next screen.

6.1. Configure LoRa parameters

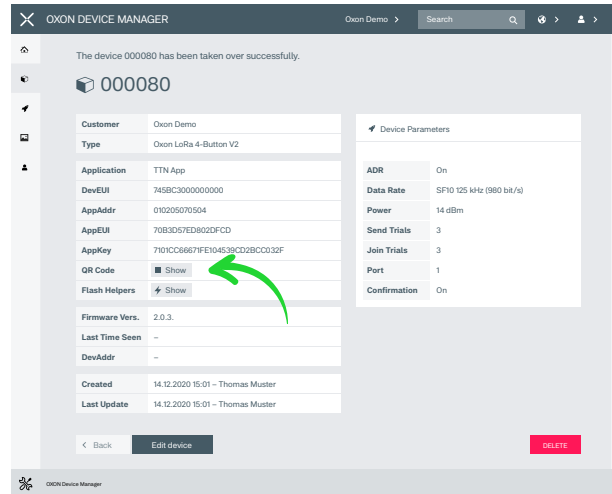
To edit the LoRa parameters of a device, put the device into the BLE mode again and choose the corresponding option in the Device Manager App. In the next screen click on "Scan Lora Parameters".



In the web browser:

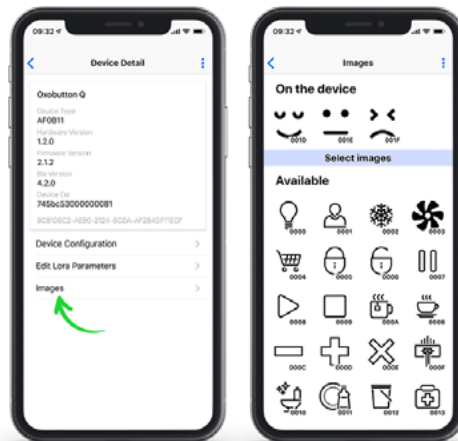
Navigate to the devices screen and click a device you would like to configure. In the following screen, click the show QR code button.

Scan the shown QR code with the OXON Device Manager App. The LoRa parameters will then be updated on your device (via Bluetooth).

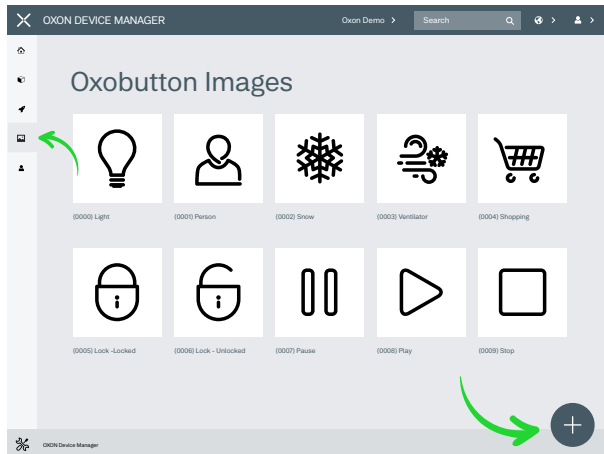


6.2. Configure images

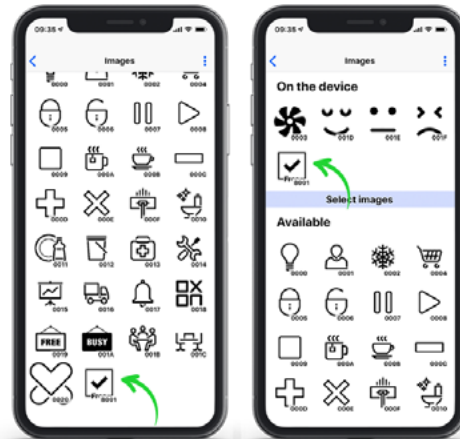
To load or delete images on the device, put the device into the BLE mode again and choose the "Images" option in the Device Manager App. In the next screen you'll see all Images currently saved on the device and all available images. Click an available image to load it onto the device.



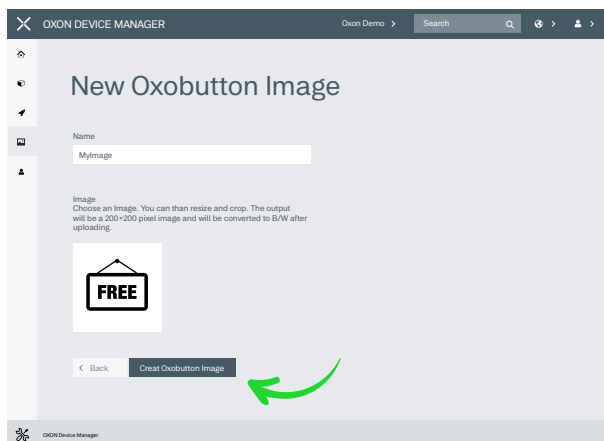
If you want to add a new image to the available images list in the app, navigate to the images screen (https://device-manager.oxon.ch/oxobutton_images) in the web browser and click the “New Oxobutton Image” button on the bottom right.



In the Device Manager App the new images should now be visible on the bottom of the available images. After Downloading the image onto your device it appears in the list of images on your device.



In the next screen, enter a name for the image and upload your image. The image will be automatically converted to a 200 × 200 pixel black & white image after uploading.



7. Further information

The installation is now finished. Further information can be found in the Documentation or in the FAQ.